

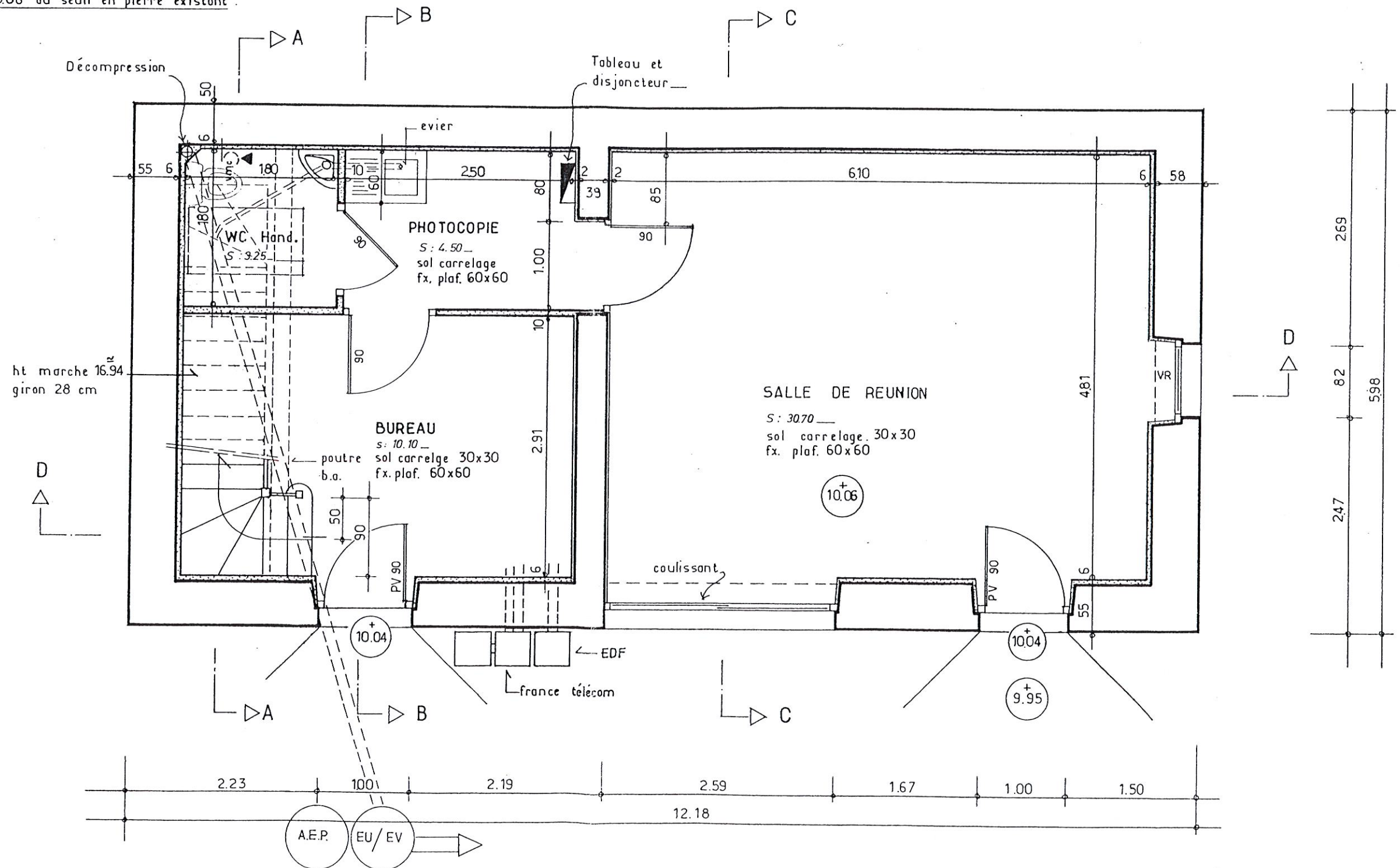
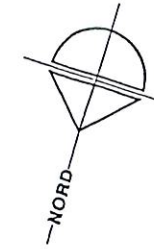
AMENAGEMENT DE SALLES DE REUNION

49410 LE MESNIL-EN-VALLEE
PROJET
Plan du rez-de-chaussée

Echelles : 1/50e -

DOSSIER P.O.E.
février 2001

(le niveau +10.06 projet correspond
au niveau +0.06 du seuil en pierre existant .



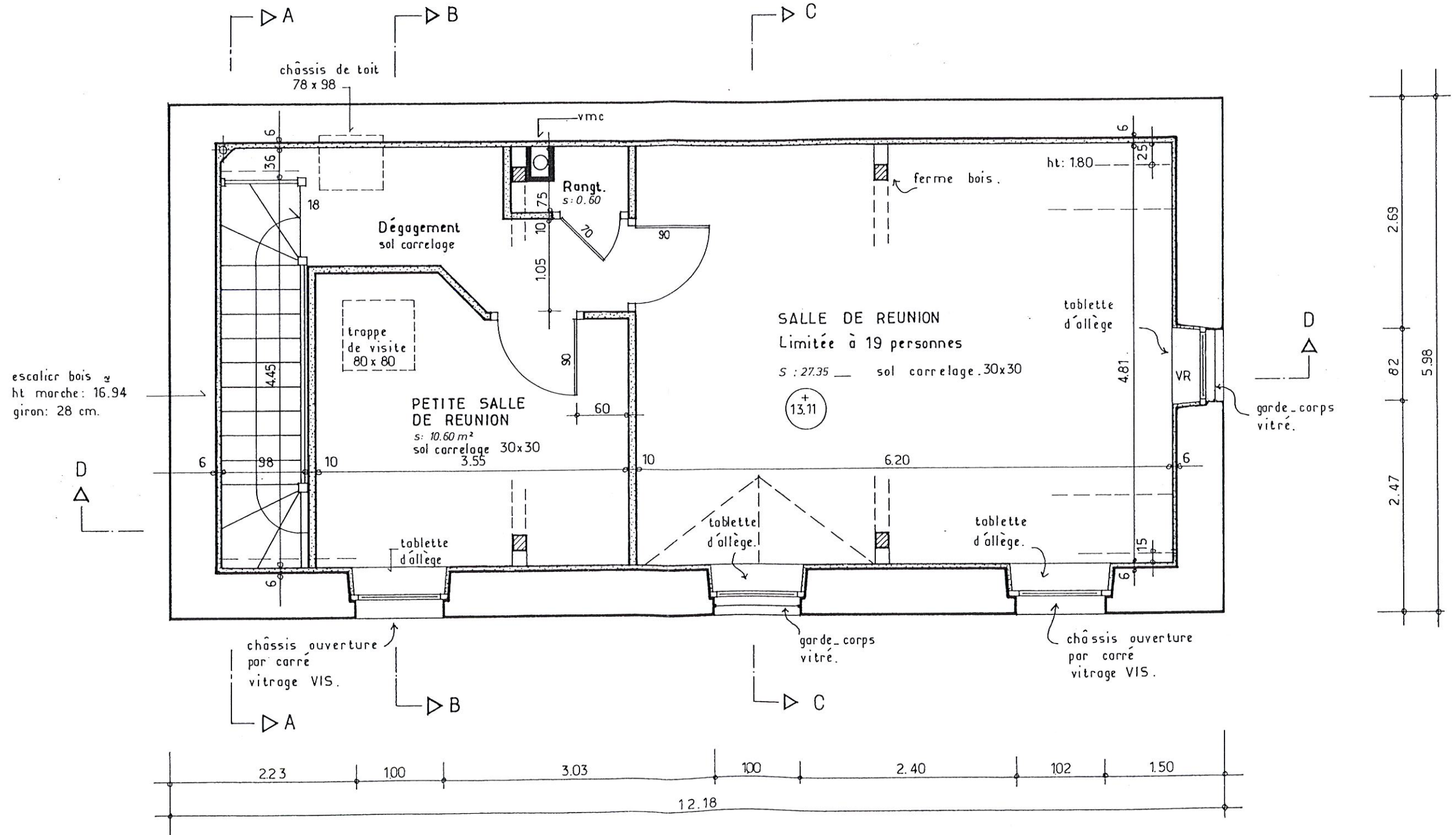
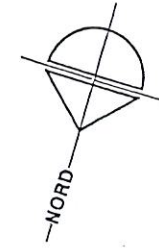
Plan d'exécution

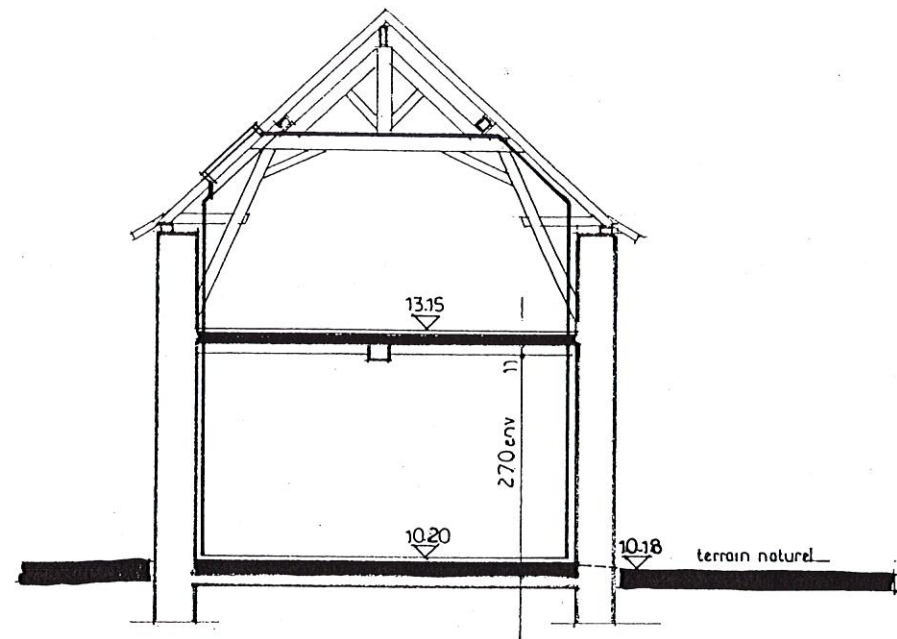
AMENAGEMENT DE SALLES DE REUNION

49410 LE MESNIL-EN-VALLEE
PROJET
Plan de l'étage

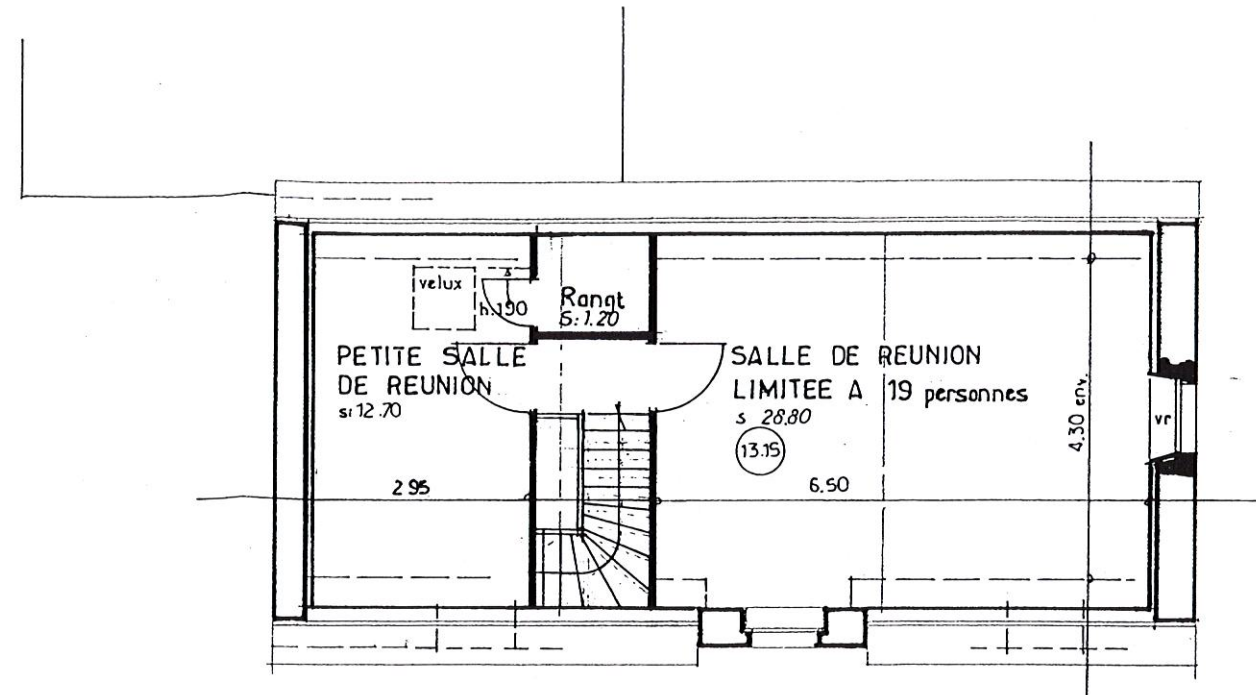
Echelles : 1/50e

DOSSIER P.O.E.
février 2001

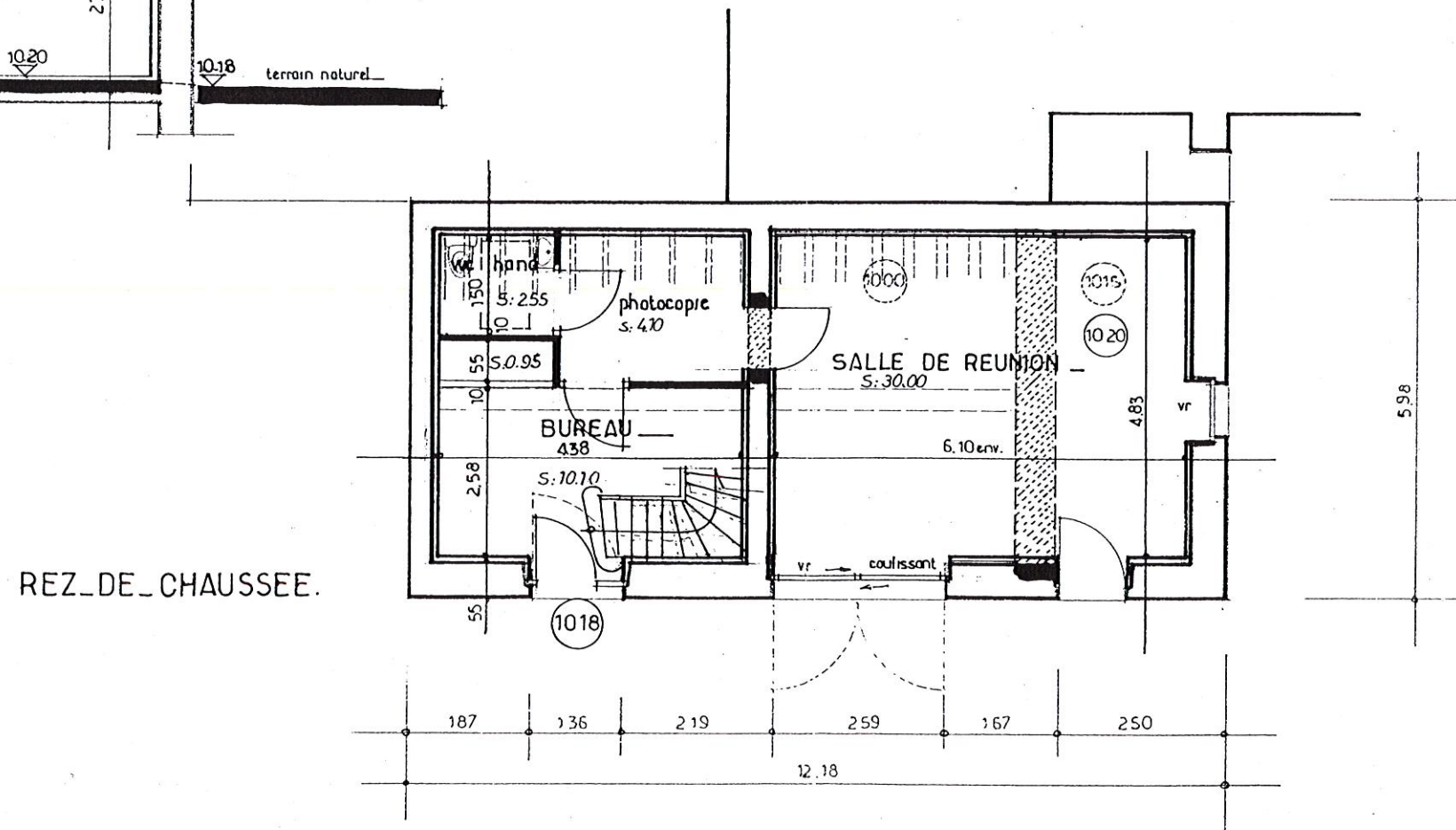




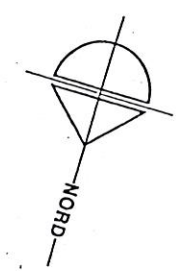
COUPE.



COMBLE.



REZ-DE-CHAUSSEE.



95,60

03/99 LE MESNIL-EN-VALLEE (49410)

10

AMENAGEMENT DE SALLES DE REUNIONS

49410 LE MESNIL-EN-VALLEE

Plans - Coupe

Echelles : 1/100e - Angers, le 28 février 2000

S.C.P.A. MASSON-BERTHELOT
ARCHITECTES D.P.L.G.
 17, rue de la Madeleine - B.P. 725
 49007 ANGERS Cedex 01
 Tél. 02 41 88 82 23 - Fax 02 41 88 55 54

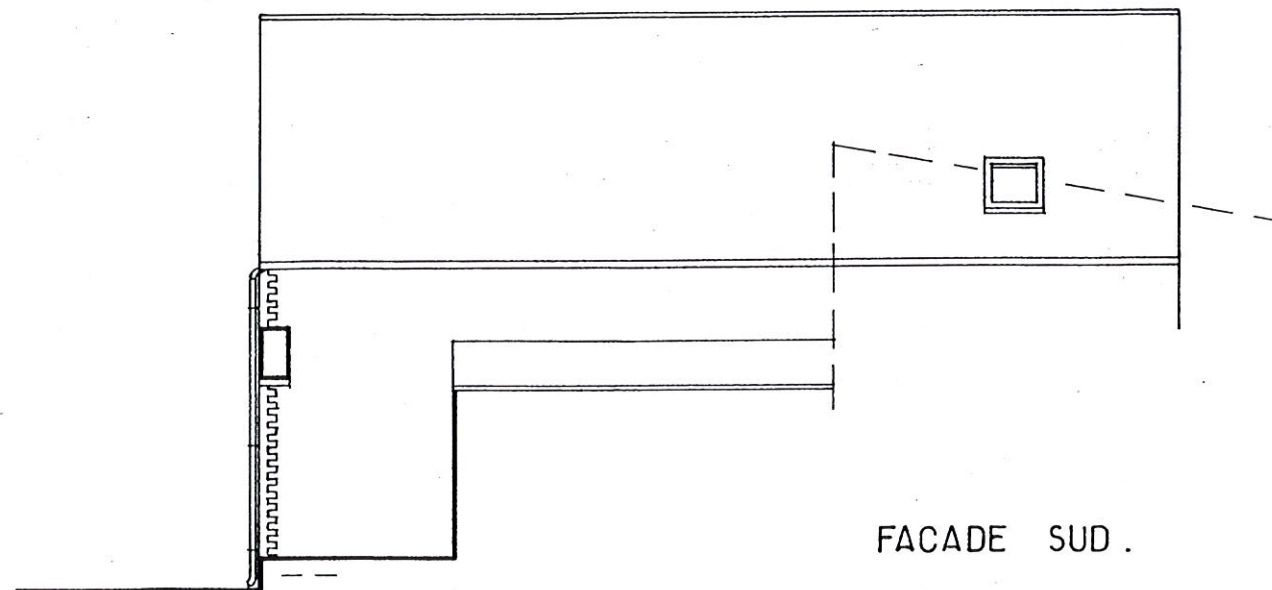


AMENAGEMENT DE SALLES DE REUNIONS

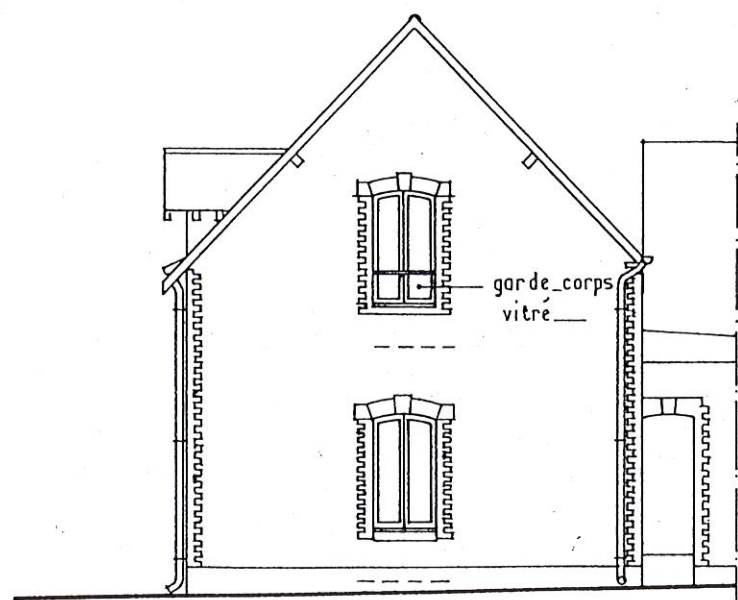
49410 LE MESNIL-EN-VALLEE

Façades

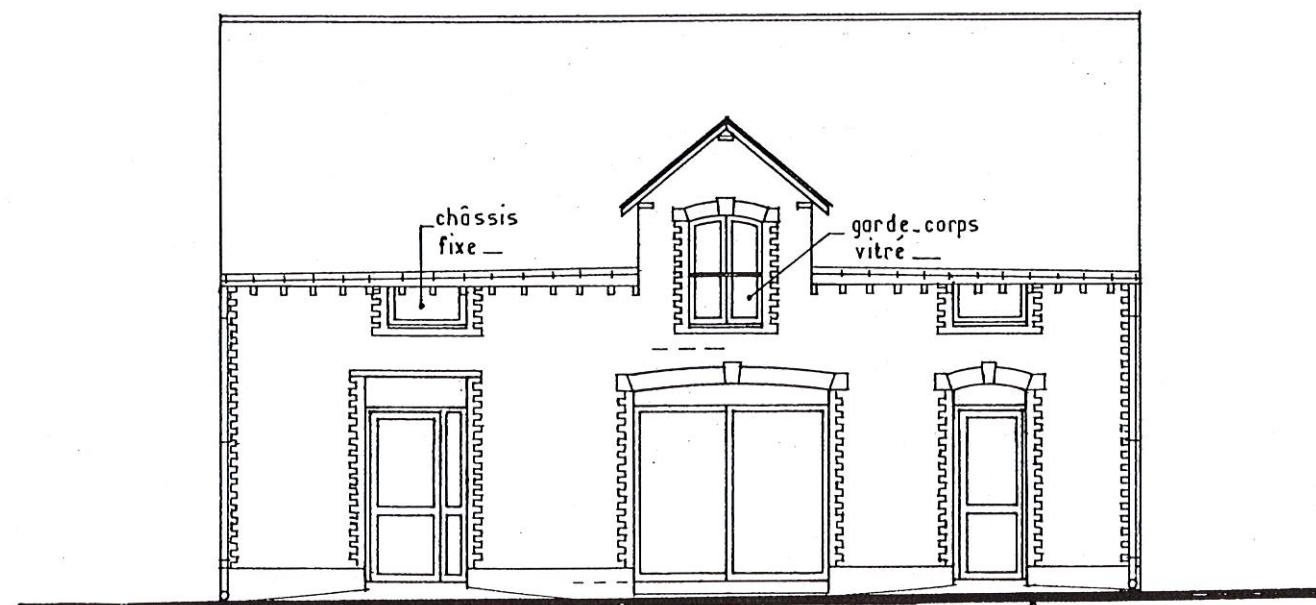
Echelles : 1/100e - Angers, le 28 février 2000



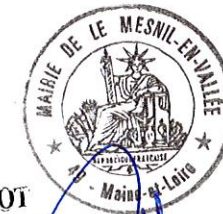
FACADE SUD .



FACADE OUEST.



FACADE NORD.



S.C.P.A. MASSON-BERTHELOT
ARCHITECTES D.P.L.G.
 17, rue de la Madeleine - B.P. 725
 49007 ANGERS Cedex 01

S.C.P.A. MASSON - BERTHELOT - Architectes D.P.L.G.
 17 rue de la Madeleine - BP 725 - 49007 ANGERS CEDEX 01 - Téléphone : 02 41 88 82 23 - Télécopie : 02 41 88 96 54